



Pendleton Office Land Acquisition

Nick Myatt

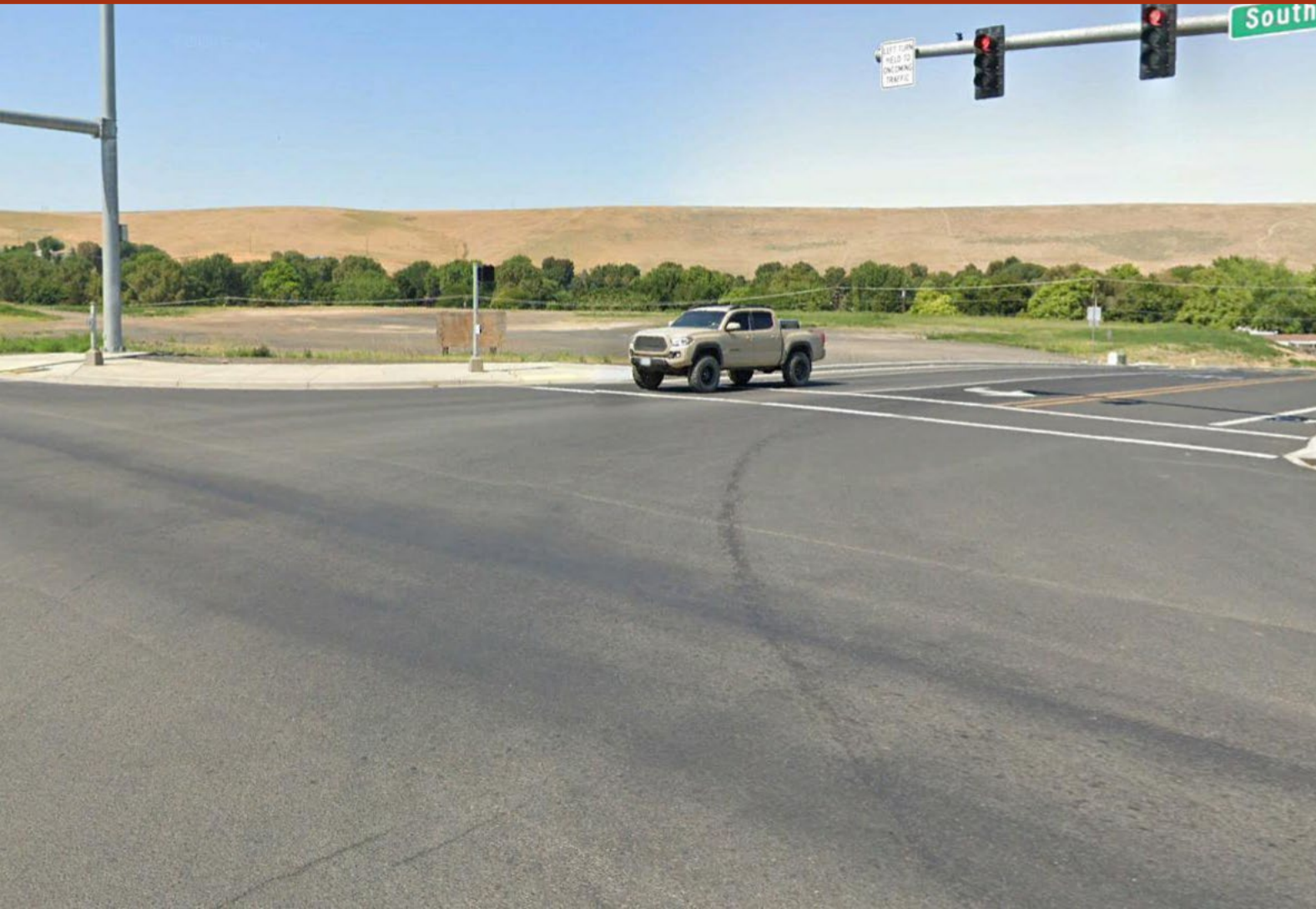
East Region Manager

Existing Pendleton Office

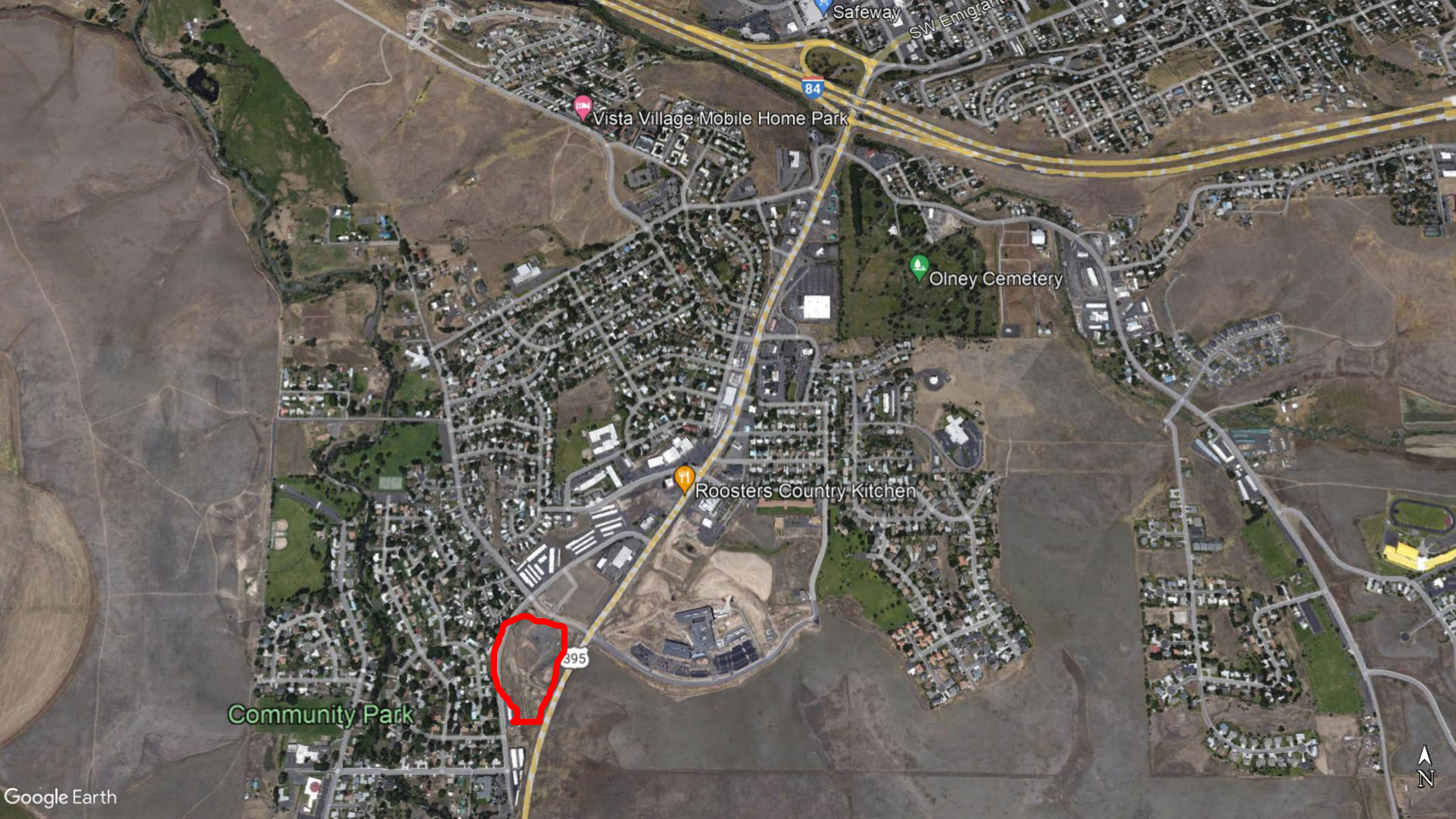


- Converted early 1900's house
- Narrow strip of land between railroad tracks and older mobile home park
- Frequent flooding adjacent to Umatilla River
- Does not meet business needs and provide adequate space for staff
- Lack of professional workspace impacts employee recruitment and retention

Proposed Land Acquisition



- Proposed purchase 9.25 acres for a new office
- \$550,000 using legislative appropriated bond funding
- Under contract
- All inspections completed
- Appraisal completed
- Review by Oregon Public Lands Advisory Committee with no concerns
- Potential for co-location with other state agencies



Safeway

SW Emigrant

84



Vista Village Mobile Home Park



Olney Cemetery



Roosters Country Kitchen


395

Community Park





Next Steps

- Close October 31, 2022
 - Finalize desired space requirements
 - Work with ODFW Engineering and architectural firm to develop plans
 - Green energy and efficient design
 - Modern, professional workspace
 - Reflect agency mission and values
 - Bid process to hire a contractor
 - Anticipated completion winter 2023/spring 2024
 - Once completed, pursue sale of current office
- 



Staff Recommendation

- ▶ Approve the acquisition of the 9.25 acre “Southgate” property in Pendleton